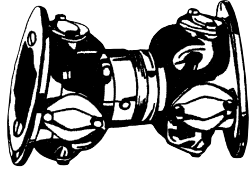


**AGRICULTURAL PARTS**

**INDUSTRIAL & IRRIGATION DRIVE SHAFTS**

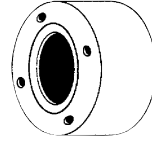
**Short Coupler Drive Shaft**



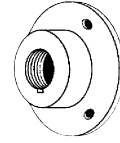
**SPECIFICATIONS**

37 SERIES RB&H #	41 SERIES RB&H #	48 SERIES RB&H #	DRIVE SHAFT LENGTH (IN.)
SC-37	SC-41	-	9 7/8
-	-	SC-48	9

**Flange Hubs for SL & SC Drive Shafts**



Special Flange



Special Large Flange

**SPECIFICATIONS**

37 & 41 SERIES RB&H #	48 SERIES RB&H #	BORE (IN.)	KEYWAY (IN.)
100-003-002	-	1 1/4	1/4 & 1/8
100-003-004	-	1 1/2	3/8 & 3/16
-	100-005-002	1 5/8	3/8
100-003-006	100-005-004	1 3/4	3/8 & 3/16
100-003-008	100-005-006	1 7/8	1/2 & 1/4
100-004-002*	100-005-007	2	1/2 & 1/4
100-004-005*	100-005-010	2 1/4	5/8 & 5/16

\* Special large flange

**AGRICULTURAL PARTS**

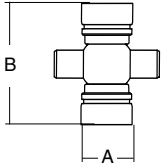
**INDUSTRIAL & IRRIGATION DRIVE SHAFTS**

**Industrial and Irrigation Drive Shafts and Components**

**Standard Length Drive Shaft**



<b>SPECIFICATIONS</b>			
37 SERIES RB&H #	41 SERIES RB&H #	48 SERIES RB&H #	DRIVE SHAFT LENGTH (IN.)
SL-37X24	SL-41X24	SL-48X24	24
SL-37X36	SL-41X36	SL-48X36	36
SL-37X48	SL-41X48	SL-48X48	48



**Cross & Bearing Kit**

<b>SPECIFICATIONS</b>			
37 SERIES RB&H #	41 SERIES RB&H #	48 SERIES RB&H #	DIMENSION LENGTH (IN.)
5-178X	5-160X	3-0180	-
1.188	1.155	1.375	A
3.374	3.936	3.875	B

**Sleeve Yokes**

<b>SPECIFICATIONS</b>		
37 SERIES RB&H #	41 SERIES RB&H #	48 SERIES RB&H #
3-3-488KX	3-3-508KX	3-3-1601KX



**Flange Yokes**

<b>SPECIFICATIONS</b>		
37 SERIES RB&H #	41 SERIES RB&H #	48 SERIES RB&H #
3-2-119	3-2-159	3-2-479