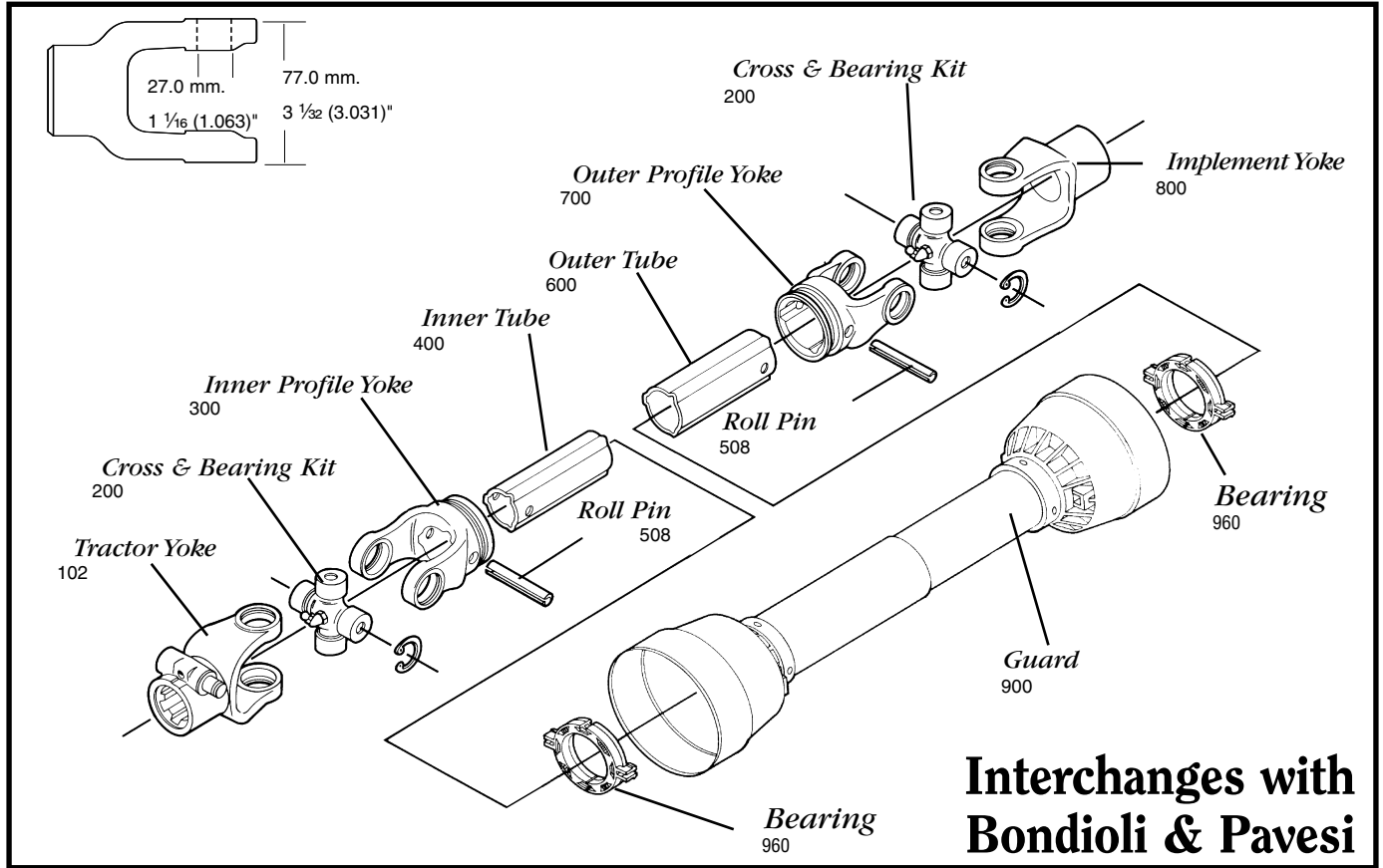


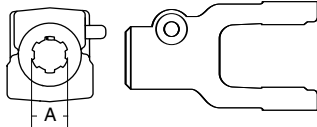
**AGRICULTURAL PARTS**

**3 SERIES METRIC**



**Interchanges with Bondioli & Pavesi**

Cross & bearing kit and outboard yokes interchange with Walterscheid I series



**Quick Disconnect**

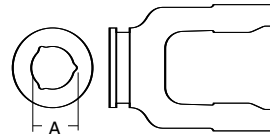
SPECIFICATIONS	
RB&H #	DIM. "A" BORE (IN.)
102-8306	1 3/8 x 6
102-8321	1 3/8 x 21

\* Repair Pin 13006121

**Tractor Yoke**

**Ball Collar Style**

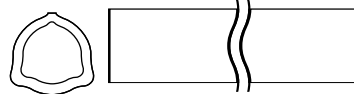
SPECIFICATIONS	
RB&H #	DIM. "A" BORE (IN.)
572030351	1 3/8 x 6
572030751	1 3/8 x 21



**Inner Profile Yoke**

SPECIFICATIONS			
RB&H #	BONDIOLI #	DIM "A" BORE (MM.)	DIM "A" BORE (IN.)
300-6336	204036852	36.8	1 29/64

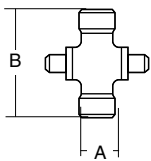
With bearing groove



**Inner Tube**

SPECIFICATIONS		
RB&H #	LENGTH (M.)	LENGTH (IN.)
600-6236	1.5	59 1/16
604-6236	1.0	39 3/8

36.0 (3.4 Wall) mm.  
1 13/32 (1/8 Wall)"  
1.417 (.134 Wall)"



**Cross & Bearing Kit**

SPECIFICATIONS					
RB&H #	BONDIOLI #	DIM "A" (MM.)	DIM "A" (IN.)	DIM "B" (MM.)	DIM "B" (IN.)
200-8370	41203	27.0	1 1/16 (1.063)	70.0	2 3/4
201-8370	Extended Life	27.0	1 1/16 (1.063)	70.0	2 3/4

Snap ring located in yoke

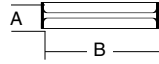
To order by phone: **1-800-669-9650**

To order by fax: **1-800-736-0141**

**AGRICULTURAL PARTS**

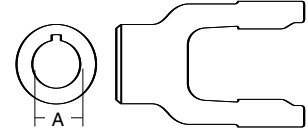
**3 SERIES METRIC**

**Roll Pin**



SPECIFICATIONS				
RB&H #	DIM "A" (MM.)	DIM "A" (IN.)	DIM "B" (MM.)	DIM "B" (IN.)
508-0860	8.0	5/16 (.315)	60.0	2 3/8

**Implement Yoke**



**Round Bore**

SPECIFICATIONS				
RB&H #	DIM "A" (MM.)	DIM "A" (IN.)	DIM "B" (MM.)	DIM "B" (IN.)
800-8325	25.0	63/64 (.984)	8.0	5/16 (.315)
800-8330	30.0	1 3/16 (1.181)	8.0	5/16 (.315)
800-8310	31.75	1 1/4 (1.250)	6.35	1/4 (.250)
800-8311	34.93	1 3/8 (1.375)	7.95	5/16 (.313)

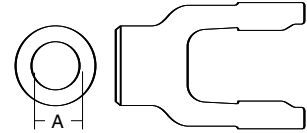
With keyway & set screw

**Outer Tube**



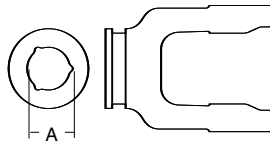
SPECIFICATIONS		
RB&H #	LENGTH (M.)	LENGTH (IN.)
600-6343	1.5	59 1/16
604-6343	1.0	39 3/8

**Shear Pin**



SPECIFICATIONS		
RB&H #	DIM "A" BORE (MM.)	DIM "A" BORE (IN.)
802-8335	35.0	1 3/8 (1.378)

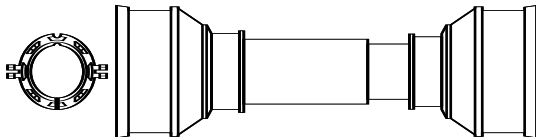
**Outer Profile Yoke**



SPECIFICATIONS			
RB&H #	BONDIOLI #	DIM "A" (MM.)	DIM "A" (IN.)
700-6343	204036851	44.0	1 47/64

With bearing groove

**Plastic Guard**



SPECIFICATIONS	
RB&H #	OVERALL DRIVELINE LENGTH (IN.)
900-2548	48
900-2560	60

Bearings 961-2534 (2 per kit)