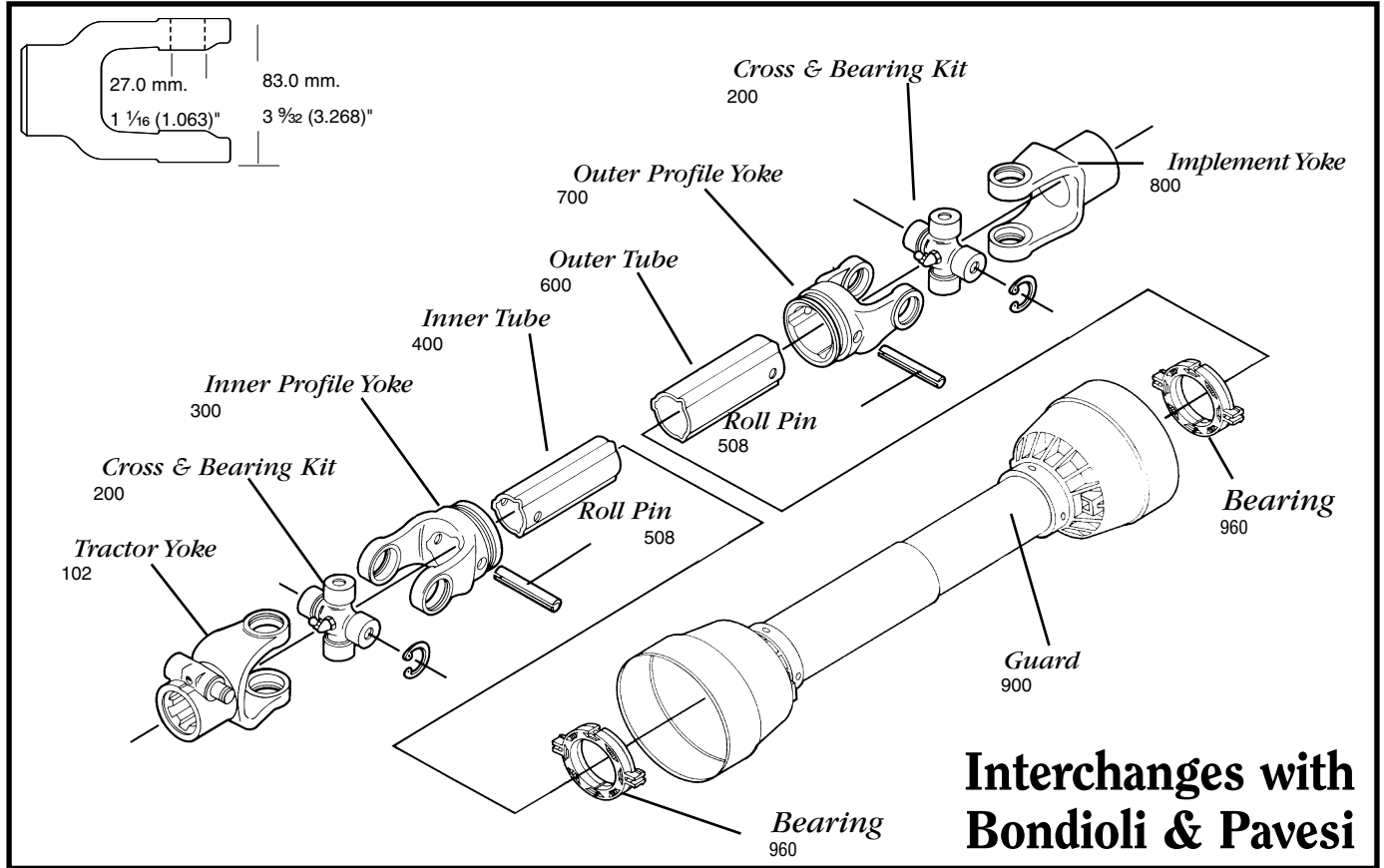
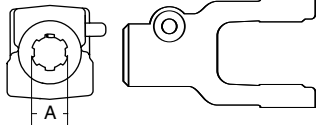


AGRICULTURAL PARTS

4 SERIES METRIC



Cross & bearing kit and outboard yokes interchange with Walterscheid 2300 series



Tractor Yoke

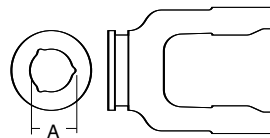
Quick Disconnect

SPECIFICATIONS	
RB&H #	DIM. "A" BORE (IN.)
102-8406	1 3/8 x 6
102-8421	1 3/8 x 21

Repair pin 13006121

Ball Collar Style

SPECIFICATIONS	
RB&H #	DIM. "A" BORE (IN.)
572040351	1 3/8 x 6
572040751	1 3/8 x 21
572043851	1 3/4 x 20



Inner Profile Yoke

SPECIFICATIONS			
RB&H #	BONDIOLI #	DIM "A" BORE (MM.)	DIM "A" BORE (IN.)
300-6436	204046852	36.8	1 29/64

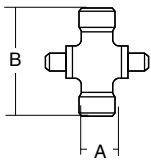
With bearing groove



Inner Tube

SPECIFICATIONS		
RB&H #	LENGTH (M.)	LENGTH (IN.)
400-6436	1.5	59 1/16
404-6436	1.0	39 3/8

36.0 (4.0 Wall) mm.
1 19/32 (3/32 Wall)"
1.417 (.157 Wall)"



Cross & Bearing Kit

SPECIFICATIONS					
RB&H #	BONDIOLI #	DIM "A" (MM.)	DIM "A" (IN.)	DIM "B" (MM.)	DIM "B" (IN.)
200-8474	41204	27.0	1 1/16 (1.063)	74.6	2 5/16
201-8474	Extended Life	27.0	1 1/16 (1.063)	74.6	2 5/16

Snap ring located in yoke

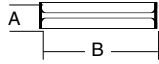
To order by phone: **1-800-669-9650**

To order by fax: **1-800-736-0141**

AGRICULTURAL PARTS

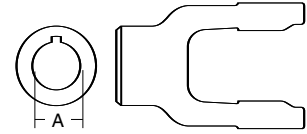
4 SERIES METRIC

Roll Pin



SPECIFICATIONS				
RB&H #	DIM "A" (MM.)	DIM "A" (IN.)	DIM "B" (MM.)	DIM "B" (IN.)
508-0860	8.0	5/16 (.315)	60.0	2 3/8

Implement Yoke



Round Bore

SPECIFICATIONS				
RB&H #	DIM "A" (MM.)	DIM "A" (IN.)	DIM "B" (MM.)	DIM "B" (IN.)
800-8430	30.0	1 3/16 (1.181)	8.0	5/16 (.315)
800-8410	31.8	1 1/4 (1.250)	6.35	1/4 (.250)
800-8411	34.91	1 3/8 (1.375)	7.95	5/16 (.313)

With keyway & set screw

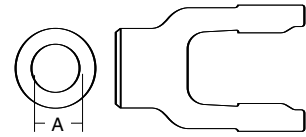
Outer Tube



SPECIFICATIONS		
RB&H #	LENGTH (M.)	LENGTH (IN.)
600-6343	1,500	59 1/16
604-6343	1,000	39 3/8

43.0 (3.0 Wall) mm.
1 1/16 (1/8 Wall)"
1.693 (.118 Wall)"

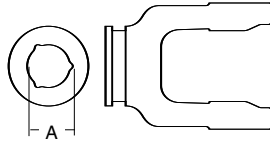
Shear Pin



SPECIFICATIONS		
RB&H #	DIM "A" BORE (MM.)	DIM "A" BORE (IN.)
802-8435	35.0	1 3/8 (1.378)

With pin hole

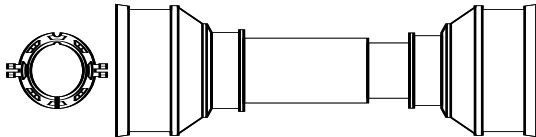
Outer Profile Yoke



SPECIFICATIONS			
RB&H #	BONDIOLI #	DIM "A" (MM.)	DIM "A" (IN.)
700-6443	204046851	43.0	1 1/16

With bearing groove

Plastic Guard



SPECIFICATIONS	
RB&H #	OVERALL DRIVELINE LENGTH (IN.)
900-2548	48
900-2560	60

Bearings 961-2534 (2 per kit)