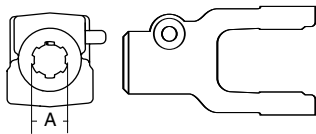
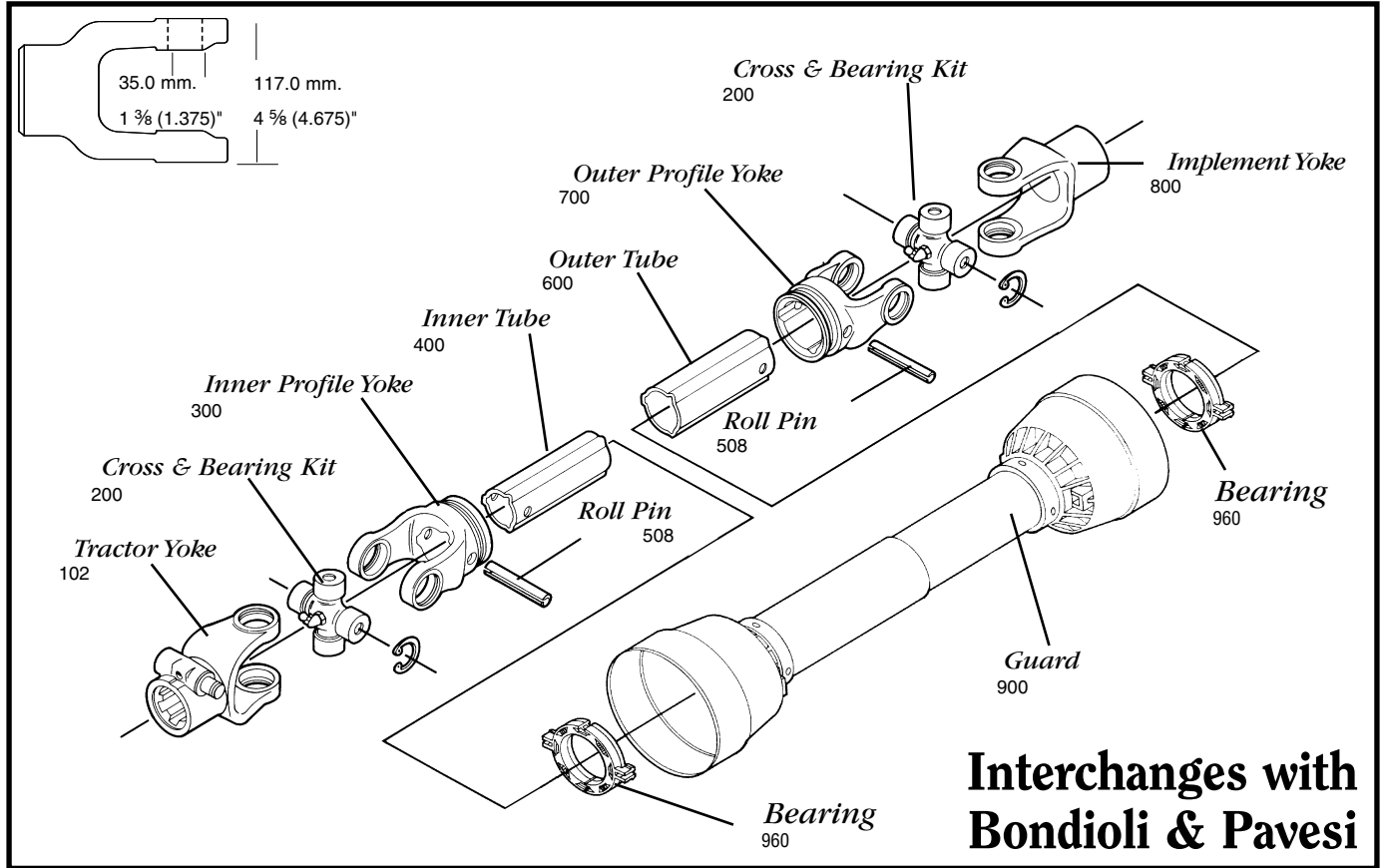


**AGRICULTURAL PARTS**

**8 SERIES METRIC**

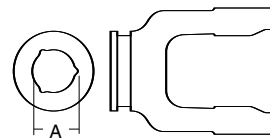


**Tractor Yoke**

**Quick Disconnect**

SPECIFICATIONS	
RB&H #	DIM. "A" BORE (IN.)
102-6806	1 3/8 x 6
102-6821	1 3/8 x 21
102-6820*	1 3/4 x 20

Repair Pin 13006121  
Repair Pin 13007120



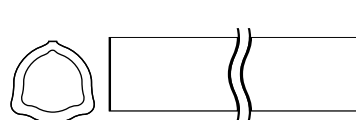
**Inner Profile Yoke**

**Ball Collar Style**

SPECIFICATIONS	
BONDIOLI #	DIM. "A" BORE (IN.)
572080351	1 3/8 x 6
572080751	1 3/8 x 21
572083851	1 3/4 x 20

SPECIFICATIONS			
RB&H #	BONDIOLI #	DIM "A" BORE (MM.)	DIM "A" BORE (IN.)
300-6854	204086861	54.0	2 1/8

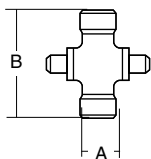
With bearing groove



**Inner Tube**

SPECIFICATIONS		
RB&H #	LENGTH (M.)	LENGTH (IN.)
400-6854	1.5	59 1/16
404-6854	1.0	39 3/8

54.0 (4.0 Wall) mm.  
2 1/8 (5/16 Wall)"  
2.125 (.158 Wall)"



**Cross & Bearing Kit**

SPECIFICATIONS					
RB&H #	BONDIOLI #	DIM "A" (MM.)	DIM "A" (IN.)	DIM "B" (MM.)	DIM "B" (IN.)
200-6806	41208	35.0	1 3/8 (1.378)	106.5	4 1/16 (4.193)
201-6806	Extended Life	35.0	1 3/8 (1.378)	106.5	4 1/16 (4.193)

Snap ring located in yoke

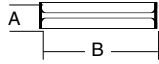
To order by phone: **1-800-669-9650**

To order by fax: **1-800-736-0141**

**AGRICULTURAL PARTS**

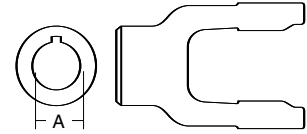
**8 SERIES METRIC**

**Roll Pin**



SPECIFICATIONS				
RB&H #	DIM "A" (MM.)	DIM "A" (IN.)	DIM "B" (MM.)	DIM "B" (IN.)
508-0880	8.0	5/16 (.315)	80.0	3 5/32
508-1280	12.0	1 9/32 (.472)	80.0	3 5/32

**Implement Yoke**



**Round Bore**

SPECIFICATIONS				
RB&H #	DIM "A" (MM.)	DIM "A" (IN.)	DIM "B" (MM.)	DIM "B" (IN.)
800-6822	35.0	1 3/8 (1.375)	8.0	5/16
800-6824	38.1	1 1/2 (1.500)	8.0	3/8
800-6828	44.5	1 3/4 (1.750)	9.5	3/8

With keyway & set screw

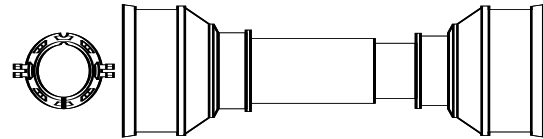
**Outer Tube**



SPECIFICATIONS		
RB&H #	LENGTH (M.)	LENGTH (IN.)
600-6863	1.5	59 1/16
604-6863	1.0	39 3/8

63.0 (4.0 Wall) mm.  
2 3/64 (5/32 Wall)"  
2.484 (.156 Wall)"

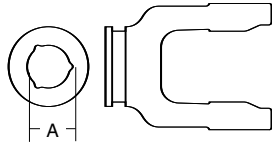
**Plastic Guard**



SPECIFICATIONS	
RB&H #	OVERALL DRIVELINE LENGTH (IN.)
900-4548	48
900-4560	60

Bearings 961-4589 (2 per kit)

**Outer Profile Yoke**



SPECIFICATIONS			
RB&H #	BONDIOLI #	DIM "A" BORE (MM.)	DIM "A" BORE (IN.)
700-6863	204086860	63	2 31/64

With bearing groove