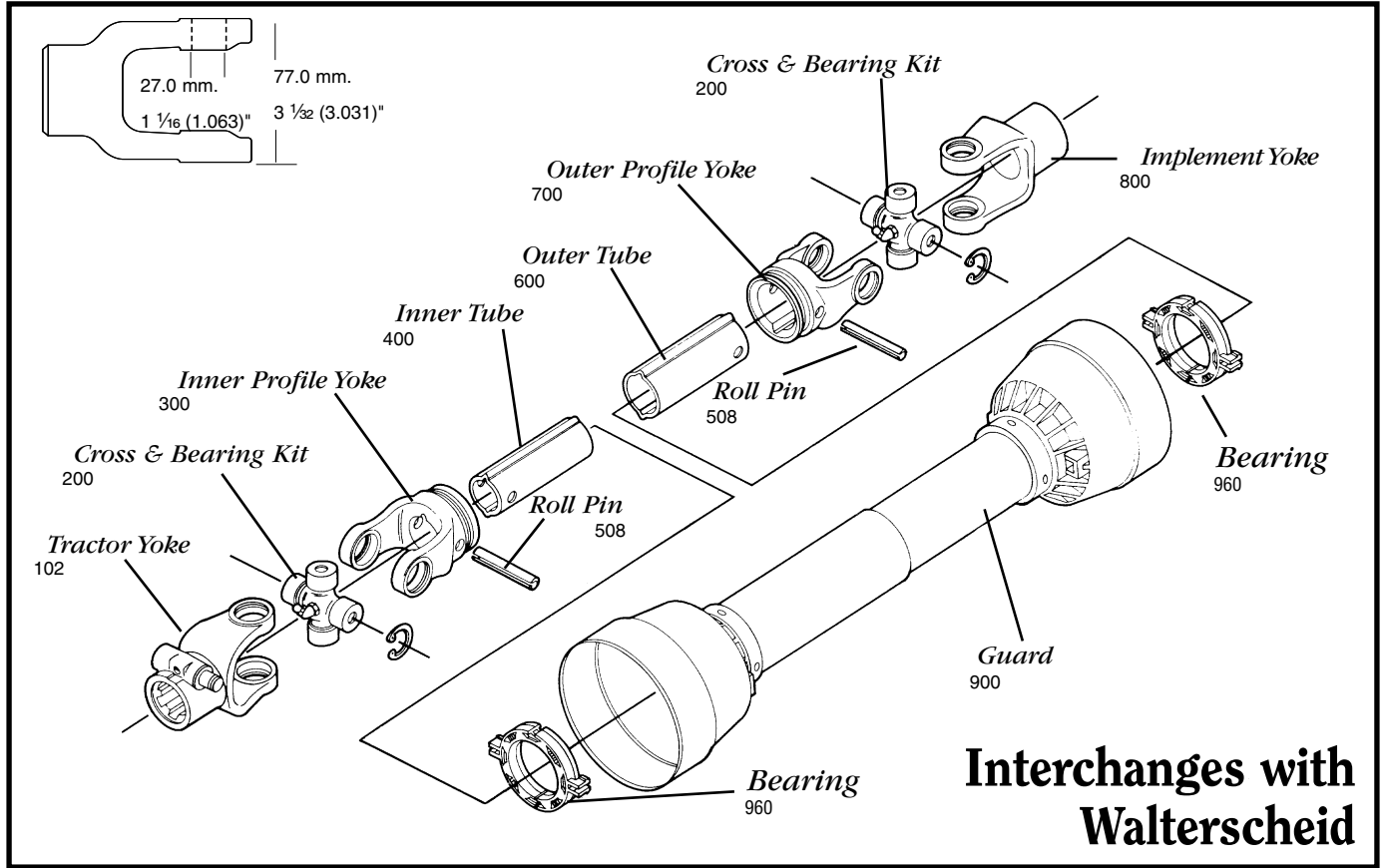
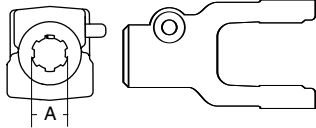


AGRICULTURAL PARTS

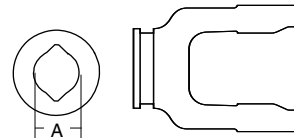
I SERIES * METRIC



Cross & bearing kit and outboard yokes interchange with Bondioli 3 series



Tractor Yoke



Inner Profile Yoke

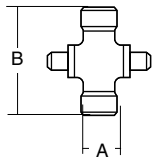
Quick Disconnect

SPECIFICATIONS	
RB&H #	DIM "A" BORE (IN.)
102-8306	1 3/8 x 6
102-8321	1 3/8 x 21

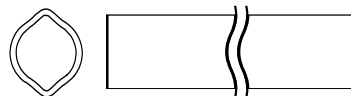
Repair Pin 13007138

SPECIFICATIONS		
RB&H #	DIM "A" BORE (MM.)	DIM "A" BORE (IN.)
300-7334	23.5	2 15/16 (.925)

With bearing groove



Cross & Bearing Kit



Inner Tube

SPECIFICATIONS					
RB&H #	WALTERScheid #	DIM "A" (MM.)	DIM "A" (IN.)	DIM "B" (MM.)	DIM "B" (IN.)
200-8370	040127	27.0	1 1/16 (1.063)	70.0	2 3/4
201-8370	Extended Life	27.0	1 1/16 (1.063)	70.0	2 3/4

Snap ring located in yoke

SPECIFICATIONS		
RB&H #	LENGTH (ML)	LENGTH (IN.)
400-7234	1.5	59 1/16
404-7234	1.0	39 3/8

34.5 (4.0 Wall) mm.
1 1/32 (3/32 Wall)"
1.358 (.158 Wall)"

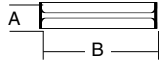
To order by phone: **1-800-669-9650**

To order by fax: **1-800-736-0141**

AGRICULTURAL PARTS

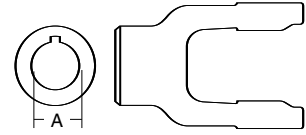
I SERIES * METRIC

Roll Pin



SPECIFICATIONS				
RB&H #	DIM "A" (MM.)	DIM "A" (IN.)	DIM "B" (MM.)	DIM "B" (IN.)
508-1065	10.0	13/32 (.394)	65.0	2 9/16 (2.559)

Implement Yoke



Round Bore

SPECIFICATIONS				
RB&H #	DIM "A" BORE (MM.)	DIM "A" BORE (IN.)	STANDARD KEYWAY (MM.)	STANDARD KEYWAY (IN.)
800-8325	25.0	63/64 (.984)	8.0	5/16 (.313)
800-8330	30.0	1 3/16 (1.181)	8.0	5/16 (.313)
800-8310	31.75	1 1/4 (1.250)	6.35	1/4 (.250)
800-8311	34.93	1 3/8 (1.375)	7.95	5/16 (.313)

With keyway & set screw

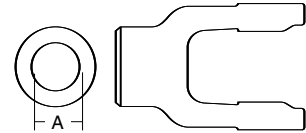
Outer Tube



SPECIFICATIONS		
RB&H #	LENGTH (M.)	LENGTH (IN.)
600-7241	1.5	59 1/16
604-7241	1.0	39 3/8

41.0 (3.0 Wall) mm.
1 5/8 (1/8 Wall)"
1.614 (.118 Wall)"

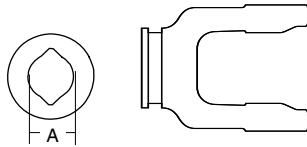
Shear Pin



SPECIFICATIONS		
RB&H #	DIM "A" BORE (MM.)	DIM "A" BORE (IN.)
802-8335	35.0	1 3/8 (1.378)

With pin hole

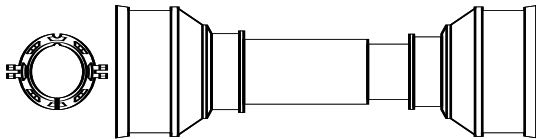
Outer Profile Yoke



SPECIFICATIONS			
RB&H #	DIM "A" (MM.)	DIM "A" (IN.)	DIM "B" (IN.)
700-7341	040541	41.0	1 5/8 (1.614)

With bearing groove

Plastic Guard



SPECIFICATIONS	
RB&H #	OVERALL DRIVELINE LENGTH (IN.)
900-2548	48
900-2560	60

Bearings 961-0251 (2 per kit)